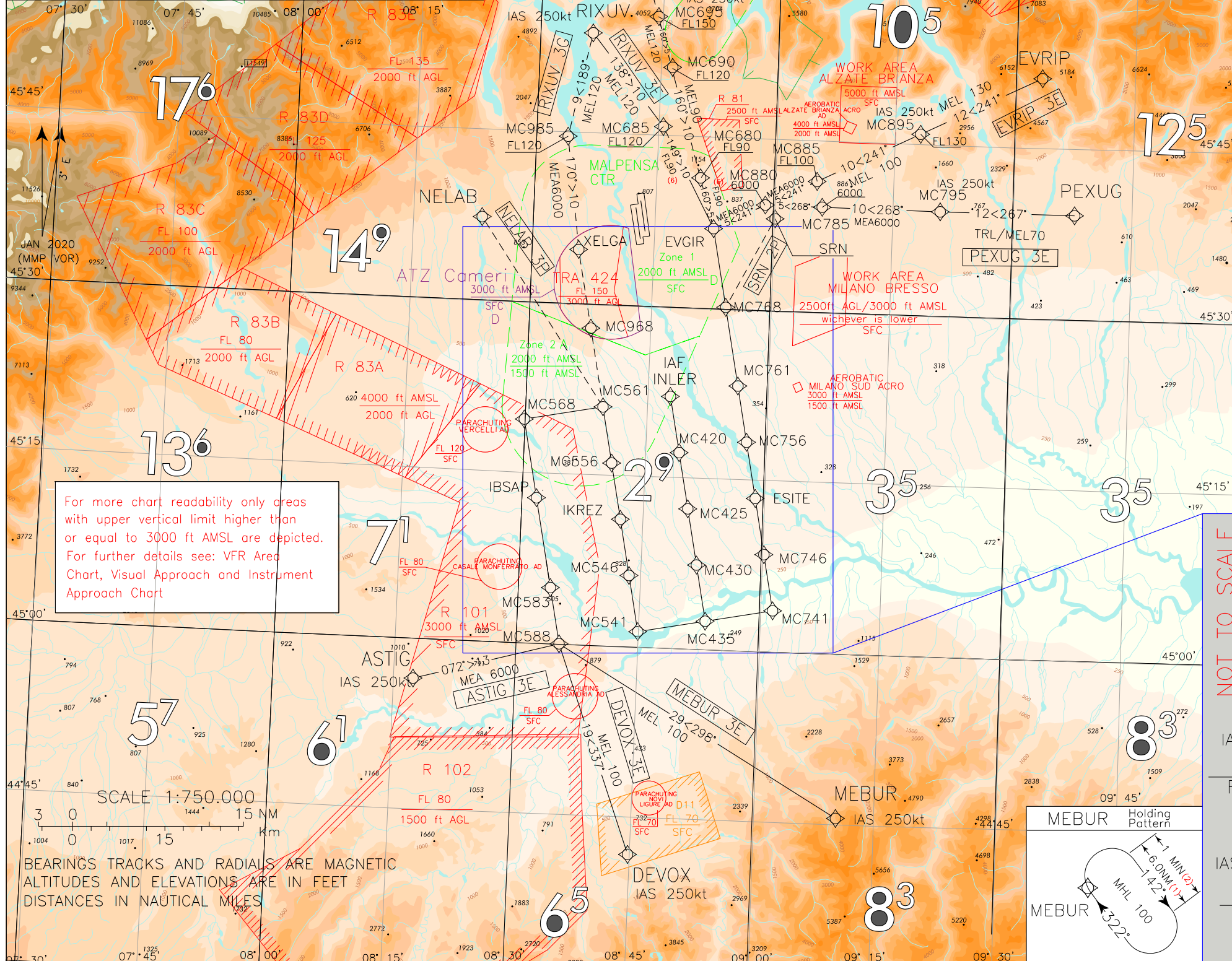
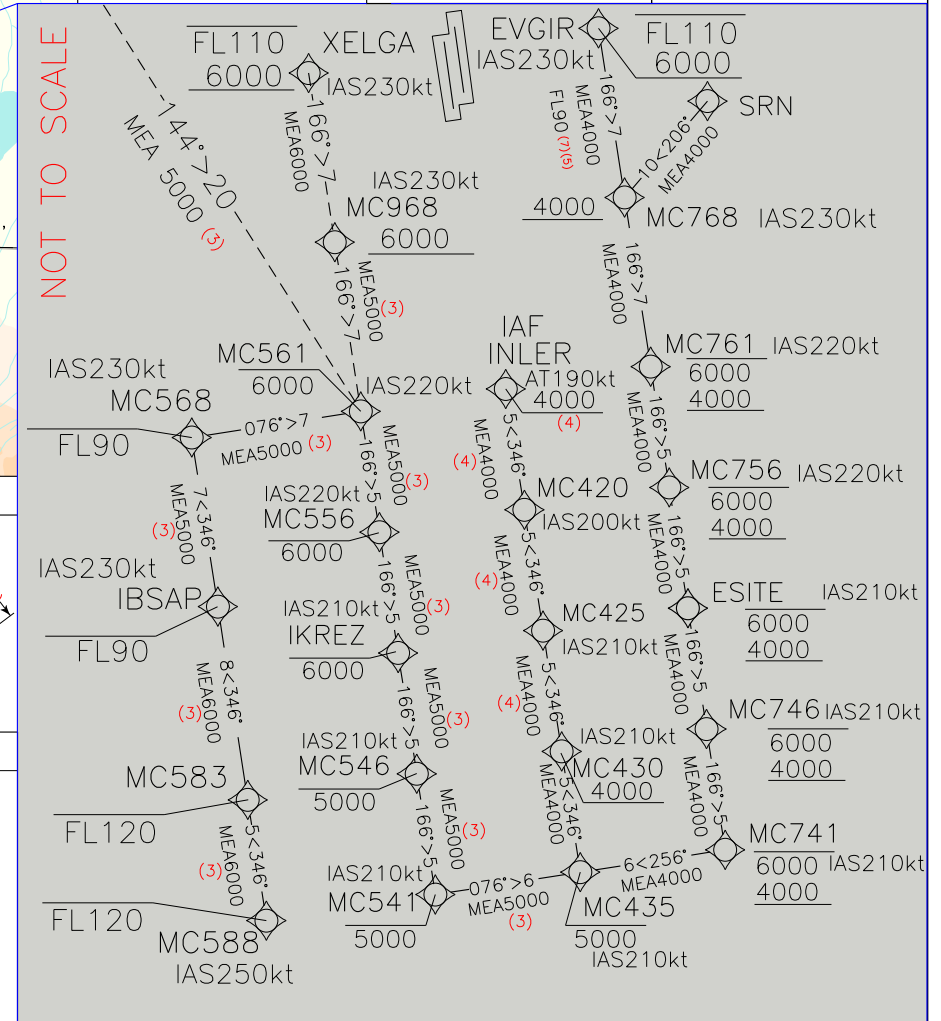


IN CASE OF RADIO FAILURE:  
 TRY TO ESTABLISH CONTACT ON ALTERNATIVE FREQUENCIES:  
 APP: 125.630MHz - 126.750MHz; EMERGENCY: 121.500MHz;  
 TWR: 128.350MHz - 119.000MHz;  
 IF STILL UNABLE TO ESTABLISH CONTACT:  
 - SQUAWK 7600  
 - APPROACH CLEARANCE ALREADY RECEIVED: CONTINUE APPROACH ACCORDINGLY  
 - APPROACH CLEARANCE NOT RECEIVED: MAINTAIN ASSIGNED LEVEL AND PROCEED  
 ALONG ASSIGNED STAR, OR EXPECTED STAR IF NOT ASSIGNED, UNTIL INLER, AT  
 INLER DESCEND TO MHA AND START APPROACH FOR RWY35L  
 REMARK: IF EAT HAS BEEN ISSUED, APPROACH SHALL START AT EAT.



LEGEND	REMARKS	ASTIG Holding Pattern	DEVOX Holding Pattern	MNM SECT ALT
<p>← STAR</p> <p>----- STAR ATC DISCRETION</p>	<p>(1) for RNAV system with Holding functionality</p> <p>(2) for RNAV system without Holding functionality</p> <p>(3) MEA 4000FT ATC Discretion</p> <p>(4) MEA 3000FT ATC Discretion</p> <p>(5) MHA 4000FT ATC Discretion</p> <p>(6) MEA 6000FT ATC Discretion</p> <p>(7) FL90 only for ODINA 3G and RIXUV 3E</p>			<p>25 NM ARP</p> <p>10300</p>

MILANO/MALPENSA		
STAR RNAV1		
RWY 35L/R		
TRANSITION ALT 6000		
FREQUENCIES		
APP Milano Radar	126.750 (N)	CH 125.630 (S)
TWR Malpensa TWR (17R/35L)	128.350	
Malpensa TWR (17L/35R)	119.000	
ATIS Malpensa Arrival Information	120.025	
INLER Holding Pattern	XELGA Holding Pattern	EVGIR Holding Pattern
IBSAP Holding Pattern	IKREZ Holding Pattern	ESITE Holding Pattern



**MILANO /MALPENSA**  
**STAR RNAV 1 RWY35 L/R**

**ASTIG 3E**

Path Terminator	Waypoint Identifier	Fly Over	Course °M(°T)	Magnetic Variation	Distance (NM)	Turn Direction	Altitude (ft)	Speed Limit (kt)	Navigation Specification
IF	ASTIG	-	-	-	-	-	-	250	RNAV1
TF	MC588	-	072 (074.3)	-	13.2	-	-FL120 +6000	250	RNAV1
TF	MC583	-	346 (349.0)	-	5.0	L	-FL120 +6000 (1)	-	RNAV1
TF	IBSAP	-	346 (348.9)	-	8.0	-	-FL90 +6000 (1)	230	RNAV1
TF	MC568	-	346 (348.9)	-	7.0	-	-FL90 +5000 (1)	230	RNAV1
TF	MC561	-	076 (078.9)	-	7.0	R	-6000 +5000 (1)	220	RNAV1
TF	MC556	-	166 (169.0)	-	5.0	R	-6000 +5000 (1)	220	RNAV1
TF	IKREZ	-	166 (169.0)	-	5.0	-	-6000 +5000 (1)	210	RNAV1
TF	MC546	-	166 (169.0)	-	5.0	-	@ 5000 (1)	210	RNAV1
TF	MC541	-	166 (169.0)	-	5.0	-	@ 5000 (1)	210	RNAV1
TF	MC435	-	076 (079.1)	-	6.0	L	@ 5000 (1)	210	RNAV1
TF	MC430	-	346 (349.1)	-	5.0	L	+4000	210	RNAV1
TF	MC425	-	346 (349.1)	-	5.0	-	+4000 (2)	210	RNAV1
TF	MC420	-	346 (349.1)	-	5.0	-	+4000 (2)	200	RNAV1
TF	INLER	-	346 (349.1)	-	5.0	-	+4000 (2)	AT 190	RNAV1

(1) +4000FT ATC discretion

(2) +3000FT ATC discretion

**DEVOX 3E**

Path Terminator	Waypoint Identifier	Fly Over	Course °M(°T)	Magnetic Variation	Distance (NM)	Turn Direction	Altitude (ft)	Speed Limit (kt)	Navigation Specification
IF	DEVOX	-	-	-	-	-	-	250	RNAV1
TF	MC588	-	337 (339.8)	-	19.5	-	-FL120 +FL100	250	RNAV1
TF	MC583	-	346 (349.0)	-	5.0	-	-FL120 +6000 (1)	-	RNAV1
TF	IBSAP	-	346 (348.9)	-	8.0	-	-FL90 +6000 (1)	230	RNAV1
TF	MC568	-	346 (348.9)	-	7.0	-	-FL90 +5000 (1)	230	RNAV1
TF	MC561	-	076 (078.9)	-	7.0	R	-6000 +5000 (1)	220	RNAV1
TF	MC556	-	166 (169.0)	-	5.0	R	-6000 +5000 (1)	220	RNAV1
TF	IKREZ	-	166 (169.0)	-	5.0	-	-6000 +5000 (1)	210	RNAV1
TF	MC546	-	166 (169.0)	-	5.0	-	@ 5000 (1)	210	RNAV1
TF	MC541	-	166 (169.0)	-	5.0	-	@ 5000 (1)	210	RNAV1
TF	MC435	-	076 (079.1)	-	6.0	L	@ 5000 (1)	210	RNAV1
TF	MC430	-	346 (349.1)	-	5.0	L	+4000	210	RNAV1
TF	MC425	-	346 (349.1)	-	5.0	-	+4000 (2)	210	RNAV1
TF	MC420	-	346 (349.1)	-	5.0	-	+4000 (2)	200	RNAV1
TF	INLER	-	346 (349.1)	-	5.0	-	+4000 (2)	AT 190	RNAV1

(1) +4000FT ATC discretion

(2) +3000FT ATC discretion

**EVRIIP 3E**

Path Terminator	Waypoint Identifier	Fly Over	Course °M(°T)	Magnetic Variation	Distance (NM)	Turn Direction	Altitude (ft)	Speed Limit (kt)	Navigation Specification
IF	EVRIIP	-	-	-	-	-	-	-	RNAV1
TF	MC895	-	241 (243.9)	-	11.9	-	+FL130	250	RNAV1
TF	MC885	-	241 (243.7)	-	10.0	-	+FL100	-	RNAV1
TF	MC880	-	241 (243.6)	-	5.0	-	+6000	-	RNAV1
TF	EVGIR	-	241 (243.5)	-	5.0	-	-FL110 +6000	230	RNAV1
TF	MC768	-	166 (169.1)	-	7.0	-	+4000	230	RNAV1
TF	MC761	-	166 (169.2)	-	7.0	-	-6000 +4000	220	RNAV1
TF	MC756	-	166 (169.2)	-	5.0	-	-6000 +4000	220	RNAV1
TF	ESITE	-	166 (169.2)	-	5.0	-	-6000 +4000	210	RNAV1
TF	MC746	-	166 (169.2)	-	5.0	-	-6000 +4000	210	RNAV1
TF	MC741	-	166 (169.2)	-	5.0	-	-6000 +4000	210	RNAV1
TF	MC435	-	256 (259.2)	-	6.0	R	-5000 +4000	210	RNAV1
TF	MC430	-	346 (349.1)	-	5.0	R	+4000	210	RNAV1
TF	MC425	-	346 (349.1)	-	5.0	-	+4000 (1)	210	RNAV1
TF	MC420	-	346 (349.1)	-	5.0	-	+4000 (1)	200	RNAV1
TF	INLER	-	346 (349.1)	-	5.0	-	+4000 (1)	AT 190	RNAV1

(1) +3000FT ATC discretion

**MEBUR 3E**

Path Terminator	Waypoint Identifier	Fly Over	Course °M(°T)	Magnetic Variation	Distance (NM)	Turn Direction	Altitude (ft)	Speed Limit (kt)	Navigation Specification
IF	MEBUR	-	-	-	-	-	-	250	RNAV1
TF	MC588	-	298 (300.4)	-	28.8	-	-FL120 +FL100	250	RNAV1
TF	MC583	-	346 (349.0)	-	5.0	-	-FL120 +6000 (1)	-	RNAV1
TF	IBSAP	-	346 (348.9)	-	8.0	-	-FL90 +6000 (1)	230	RNAV1
TF	MC568	-	346 (348.9)	-	7.0	-	-FL90 +5000 (1)	230	RNAV1
TF	MC561	-	076 (078.9)	-	7.0	R	-6000 +5000 (1)	220	RNAV1
TF	MC556	-	166 (169.0)	-	5.0	R	-6000 +5000 (1)	220	RNAV1
TF	IKREZ	-	166 (169.0)	-	5.0	-	-6000 +5000 (1)	210	RNAV1
TF	MC546	-	166 (169.0)	-	5.0	-	@ 5000 (1)	210	RNAV1
TF	MC541	-	166 (169.0)	-	5.0	-	@ 5000 (1)	210	RNAV1
TF	MC435	-	076 (079.1)	-	6.0	L	@ 5000 (1)	210	RNAV1
TF	MC430	-	346 (349.1)	-	5.0	L	+4000	210	RNAV1
TF	MC425	-	346 (349.1)	-	5.0	-	+4000 (2)	210	RNAV1
TF	MC420	-	346 (349.1)	-	5.0	-	+4000 (2)	200	RNAV1
TF	INLER	-	346 (349.1)	-	5.0	-	+4000 (2)	AT 190	RNAV1

(1) +4000FT ATC discretion

(2) +3000FT ATC discretion

**ODINA 3G (ATC discretion)**

Path Terminator	Waypoint Identifier	Fly Over	Course °M(°T)	Magnetic Variation	Distance (NM)	Turn Direction	Altitude (ft)	Speed Limit (kt)	Navigation Specification
IF	ODINA	-	-	-	-	-	-	-	RNAV1
TF	MC695	-	160 (163.0)	-	10.5	-	+FL150	250	RNAV1
TF	MC690	-	160 (163.1)	-	5.0	-	+FL120	-	RNAV1
TF	MC680	-	160 (163.1)	-	10.0	-	+FL90	-	RNAV1
TF	EVGIR	-	160 (163.1)	-	5.0	-	-FL110 +FL90 (1)	230	RNAV1
TF	MC768	-	166 (169.1)	-	7.0	-	+FL90 (2)	230	RNAV1
TF	MC761	-	166 (169.2)	-	7.0	-	-6000 +4000	220	RNAV1
TF	MC756	-	166 (169.2)	-	5.0	-	-6000 +4000	220	RNAV1
TF	ESITE	-	166 (169.2)	-	5.0	-	-6000 +4000	210	RNAV1
TF	MC746	-	166 (169.2)	-	5.0	-	-6000 +4000	210	RNAV1
TF	MC741	-	166 (169.2)	-	5.0	-	-6000 +4000	210	RNAV1
TF	MC435	-	256 (259.2)	-	6.0	R	-5000 +4000	210	RNAV1
TF	MC430	-	346 (349.1)	-	5.0	R	+4000	210	RNAV1
TF	MC425	-	346 (349.1)	-	5.0	-	+4000 (3)	210	RNAV1
TF	MC420	-	346 (349.1)	-	5.0	-	+4000 (3)	200	RNAV1
TF	INLER	-	346 (349.1)	-	5.0	-	+4000 (3)	AT 190	RNAV1

(1) +6000FT ATC discretion

(2) +4000FT ATC discretion

(3) +3000FT ATC discretion

**NELAB 3P (ATC discretion)**

Path Terminator	Waypoint Identifier	Fly Over	Course °M(°T)	Magnetic Variation	Distance (NM)	Turn Direction	Altitude (ft)	Speed Limit (kt)	Navigation Specification
IF	NELAB	-	-	-	-	-	-	-	RNAV1
TF	MC561	-	144 (147.2)	-	19.8	-	-6000 +5000 (1)	220	RNAV1
TF	MC556	-	166 (169.0)	-	5.0	-	-6000 +5000 (1)	220	RNAV1
TF	IKREZ	-	166 (169.0)	-	5.0	-	-6000 +5000 (1)	210	RNAV1
TF	MC546	-	166 (169.0)	-	5.0	-	@ 5000 (1)	210	RNAV1
TF	MC541	-	166 (169.0)	-	5.0	-	@ 5000 (1)	210	RNAV1
TF	MC435	-	076 (079.1)	-	6.0	L	@ 5000 (1)	210	RNAV1
TF	MC430	-	346 (349.1)	-	5.0	L	+4000	210	RNAV1
TF	MC425	-	346 (349.1)	-	5.0	-	+4000 (2)	210	RNAV1
TF	MC420	-	346 (349.1)	-	5.0	-	+4000 (2)	200	RNAV1
TF	INLER	-	346 (349.1)	-	5.0	-	+4000 (2)	AT 190	RNAV1

(1) +4000FT ATC discretion

(2) +3000FT ATC discretion

**PEXUG 3E**

Path Terminator	Waypoint Identifier	Fly Over	Course °M(°T)	Magnetic Variation	Distance (NM)	Turn Direction	Altitude (ft)	Speed Limit (kt)	Navigation Specification
IF	PEXUG	-	-	-	-	-	-	-	RNAV1
TF	MC795	-	267 (270.1)	-	11.8	-	+TRL/FL70	250	RNAV1
TF	MC785	-	268 (270.5)	-	10.4	-	+6000	-	RNAV1
TF	MC880	-	268 (270.3)	-	5.0	-	+6000	-	RNAV1
TF	EVGIR	-	241 (243.5)	-	5.0	-	-FL110 +6000	230	RNAV1
TF	MC768	-	166 (169.1)	-	7.0	-	+4000	230	RNAV1
TF	MC761	-	166 (169.2)	-	7.0	-	-6000 +4000	220	RNAV1
TF	MC756	-	166 (169.2)	-	5.0	-	-6000 +4000	220	RNAV1
TF	ESITE	-	166 (169.2)	-	5.0	-	-6000 +4000	210	RNAV1
TF	MC746	-	166 (169.2)	-	5.0	-	-6000 +4000	210	RNAV1
TF	MC741	-	166 (169.2)	-	5.0	-	-6000 +4000	210	RNAV1
TF	MC435	-	256 (259.2)	-	6.0	R	-5000 +4000	210	RNAV1
TF	MC430	-	346 (349.1)	-	5.0	R	+4000	210	RNAV1
TF	MC425	-	346 (349.1)	-	5.0	-	+4000 (1)	210	RNAV1
TF	MC420	-	346 (349.1)	-	5.0	-	+4000 (1)	200	RNAV1
TF	INLER	-	346 (349.1)	-	5.0	-	+4000 (1)	AT 190	RNAV1

(1) +3000FT ATC discretion



## RIXUV 3E

Path Terminator	Waypoint Identifier	Fly Over	Course °M(°T)	Magnetic Variation	Distance (NM)	Turn Direction	Altitude (ft)	Speed Limit (kt)	Navigation Specification
IF	RIXUV	-	-	-	-	-	-	250	RNAV1
TF	MC685	-	138 (140.9)	-	10.3	-	+FL120	-	RNAV1
TF	EVGIR	-	149 (151.6)	-	10.0	-	-FL110 +FL90 (1)	230	RNAV1
TF	MC768	-	166 (169.1)	-	7.0	-	+FL90 (2)	230	RNAV1
TF	MC761	-	166 (169.2)	-	7.0	-	-6000 +4000	220	RNAV1
TF	MC756	-	166 (169.2)	-	5.0	-	-6000 +4000	220	RNAV1
TF	ESITE	-	166 (169.2)	-	5.0	-	-6000 +4000	210	RNAV1
TF	MC746	-	166 (169.2)	-	5.0	-	-6000 +4000	210	RNAV1
TF	MC741	-	166 (169.2)	-	5.0	-	-6000 +4000	210	RNAV1
TF	MC435	-	256 (259.2)	-	6.0	R	-5000 +4000	210	RNAV1
TF	MC430	-	346 (349.1)	-	5.0	R	+4000	210	RNAV1
TF	MC425	-	346 (349.1)	-	5.0	-	+4000 (3)	210	RNAV1
TF	MC420	-	346 (349.1)	-	5.0	-	+4000 (3)	200	RNAV1
TF	INLER	-	346 (349.1)	-	5.0	-	+4000 (3)	AT 190	RNAV1

- (1) 6000FT ATC discretion  
 (2) +4000FT ATC discretion  
 (3) +3000FT ATC discretion

**RIXUV 3G (ATC discretion)**

Path Terminator	Waypoint Identifier	Fly Over	Course °M(°T)	Magnetic Variation	Distance (NM)	Turn Direction	Altitude (ft)	Speed Limit (kt)	Navigation Specification
IF	RIXUV	-	-	-	-	-	-	250	RNAV1
TF	MC985	-	189 (191.4)	-	9.3	-	+FL120	-	RNAV1
TF	XELGA	-	170 (172.4)	-	10.0	-	-FL110 +6000	230	RNAV1
TF	MC968	-	166 (169.0)	-	7.0	-	+6000	-	RNAV1
TF	MC561	-	166 (169.0)	-	7.0	-	-6000 +5000 (1)	220	RNAV1
TF	MC556	-	166 (169.0)	-	5.0	-	-6000 +5000 (1)	220	RNAV1
TF	IKREZ	-	166 (169.0)	-	5.0	-	-6000 +5000 (1)	210	RNAV1
TF	MC546	-	166 (169.0)	-	5.0	-	@ 5000 (1)	210	RNAV1
TF	MC541	-	166 (169.0)	-	5.0	-	@ 5000 (1)	210	RNAV1
TF	MC435	-	076 (079.1)	-	6.0	L	@ 5000 (1)	210	RNAV1
TF	MC430	-	346 (349.1)	-	5.0	L	+4000	210	RNAV1
TF	MC425	-	346 (349.1)	-	5.0	-	+4000 (2)	210	RNAV1
TF	MC420	-	346 (349.1)	-	5.0	-	+4000 (2)	200	RNAV1
TF	INLER	-	346 (349.1)	-	5.0	-	+4000 (2)	AT 190	RNAV1

(1) +4000FT ATC discretion

(2) +3000FT ATC discretion

**SRN 3P (ATC discretion)**

Path Terminator	Waypoint Identifier	Fly Over	Course °M(°T)	Magnetic Variation	Distance (NM)	Turn Direction	Altitude (ft)	Speed Limit (kt)	Navigation Specification
IF	SRN	-	-	-	-	-	-	-	RNAV1
TF	MC768	-	206 (209.2)	-	9.8	-	+4000	-	RNAV1
TF	MC761	-	166 (169.2)	-	7.0	-	-6000 +4000	220	RNAV1
TF	MC756	-	166 (169.2)	-	5.0	-	-6000 +4000	220	RNAV1
TF	ESITE	-	166 (169.2)	-	5.0	-	-6000 +4000	210	RNAV1
TF	MC746	-	166 (169.2)	-	5.0	-	-6000 +4000	210	RNAV1
TF	MC741	-	166 (169.2)	-	5.0	-	-6000 +4000	210	RNAV1
TF	MC435	-	256 (259.2)	-	6.0	R	-5000 +4000	210	RNAV1
TF	MC430	-	346 (349.1)	-	5.0	R	+4000	210	RNAV1
TF	MC425	-	346 (349.1)	-	5.0	-	+4000 (1)	210	RNAV1
TF	MC420	-	346 (349.1)	-	5.0	-	+4000 (1)	200	RNAV1
TF	INLER	-	346 (349.1)	-	5.0	-	+4000 (1)	AT 190	RNAV1

(1) +3000FT ATC discretion

**HOLDING RNAV 1**

Path Terminator	Waypoint Identifier	Inbound Course °M (°T)	Leg Distance (NM) (1)	Timing(min.)/ Waypoint Distance (NM) (2)	Turn Direction	Minimum Altitude (FT)	Maximum Altitude (FL)	Speed Limit (kt)	Magnetic Variation (°)	Navigation Specification
HM	ASTIG	084 (087.0)	6.0	1.0/ -	L	+FL100	-	-	3	RNAV1
HM	DEVOX	018 (021.0)	6.0	1.0/ -	L	+FL100	-	-	3	RNAV1
HM (4)	EVGIR	200 (203.0)	4.5	1.0/ -	L	+6000	-	-210	3	RNAV1
HM	EVRIP	303 (306.0)	6.5	1.0/ -	L	+FL130	-	-	3	RNAV1
HM	IBSAP	346 (348.9)	4.5	1.0/ -	L	+6000	-	-	3	RNAV1
HM	INLER	356 (359.0)	3.5	1.0/ -	R	+4000	-	-190	3	RNAV1
HM	MEBUR	322 (325.0)	6.0	1.0/ -	R	+FL100	-	-	3	RNAV1
HM	ESITE	195 (198.0)	4.0	1.0/ -	L	+5000 (3)	-	-210	3	RNAV1
HM	IKREZ	141 (144.0)	4.0	1.0/ -	R	+5000 (3)	-	-210	3	RNAV1
HM	PEXUG	288 (291.0)	6.0	1.0/ -	L	+FL90	-	-	3	RNAV1
HM (4)	XELGA	141 (144.0)	4.5	1.0/ -	R	+6000	-	-210	3	RNAV1

- (1) RNAV system with holding functionality  
(2) RNAV system without holding functionality  
(3) MHA 4000FT ATC discretion  
(4) Direct Entry Only

**WAYPOINT LIST**

<b>Waypoint Identifier</b>	<b>Coordinates</b>
MC420	45°17'15.67" N 008°49'20.14" E
MC425	45°12'21.00" N 008°50'40.41" E
MC430	45°07'26.31" N 008°52'00.44" E
MC435	45°02'31.60" N 008°53'20.24" E
MC541	45°01'23.49" N 008°45'01.43" E
MC546	45°06'18.10" N 008°43'40.95" E
MC556	45°16'07.26" N 008°40'59.27" E
MC561	45°21'01.81" N 008°39'38.09" E
MC568	45°19'41.13" N 008°29'53.51" E
MC583	45°04'57.79" N 008°33'58.89" E
MC588	45°00'03.27" N 008°35'20.06" E
MC680	45°41'50.53" N 008°50'32.55" E
MC685	45°45'51.66" N 008°45'50.46" E
MC690	45°51'24.73" N 008°46'23.38" E
MC695	45°56'11.80" N 008°44'18.25" E
MC741	45°03'39.07" N 009°01'39.11" E
MC746	45°08'33.88" N 009°00'19.99" E
MC756	45°18'23.43" N 008°57'41.08" E
MC761	45°23'18.18" N 008°56'21.28" E
MC768	45°30'10.79" N 008°54'29.17" E
MC785	45°39'16.19" N 009°06'07.05" E
MC795	45°39'12.00" N 009°20'55.00" E
MC880	45°39'17.52" N 008°58'59.2" E
MC885	45°41'31.29" N 009°05'22.34" E
MC895	45°45'57.72" N 009°18'10.09" E
MC968	45°27'54.18" N 008°37'44.29" E
MC985	45°44'41.31" N 008°33'56.69" E